

AXKID
UP



Installation Manual

Table of content

Safety information.....	3
Placement in car.....	4
Product overview.....	5
Install the car seat.....	7
Installation using ISOFIX and Support leg.....	7
Installation using ISOFIX attachments.....	11
Installation without ISOFIX or Support leg.....	14
Secure the child.....	16
Adjustments.....	19
Uninstall the car seat.....	21
Care and maintenance.....	22
Warranty.....	23
Recycling.....	24

Safety information

Axxkid Up is a forward-facing car seat approved for children with a height between 100–150 cm.

Axxkid Up is suitable to use from approximately 4 years of age, or when the child is 100 cm in height.



Axxkid Up is a forward-facing i-Size booster seat. It is approved according to UN Regulation No. 129, for use in i-Size compatible vehicle seating positions as indicated by vehicle manufacturers in the vehicle's user manual. If in doubt, consult either the Enhanced Child Restraint System manufacturer (www.axkid.com) or the retailer.



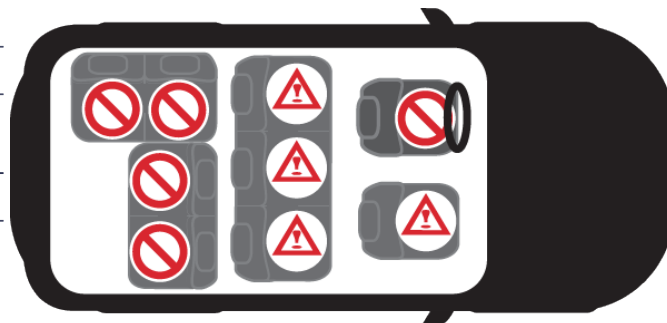
Warning: An incorrect installation may seriously affect the safety for the child.

- Always follow the instructions in this manual. If in any doubt, scan the QR code or contact the retailer where the car seat was purchased or info@axkid.com for a demonstration of a correct installation.
- For the latest version of the instruction manual, visit www.axkid.com/manuals.
- Do not use the car seat in a seating position where an active frontal airbag is fitted. To install the car seat in this location the airbag must be switched off according to the vehicle manufacturer's instructions.
- In case of an accident, no matter how small, the car seat should always be replaced. It may have damage that is not visible and could seriously affect the safety of the child.
- If the car seat has been exposed to direct sunlight, make sure the car seat is not too hot before installing the child.
- Never leave the child unattended in the vehicle.
- Ensure that any luggage or loose objects are secured in the vehicle as they may cause injuries to passengers in the event of an accident.
- Ensure that the car seat is installed in a way where no parts become trapped by movable seats, car doors, etc.
- Make sure there is no twist in the seat belt.
- Do not attempt to disassemble or modify any part of the car seat. The warranty and the safety performance of the car seat could be affected if doing so.
- Never use the car seat without the textile cover. The textile cover is a safety feature and may only be replaced with an Axxkid original seat textile cover.
- Read the vehicle handbook and the vehicle list at www.axkid.com to find which seating positions are suitable for this car seat.
- Axxkid recommends to always use a seat protection to protect the vehicle seat from scratches and dirt.
- The car seat must only be installed forward-facing.
- Always make sure that the seat belt is adjusted to correctly fit the child's body.
- Make sure that the child's back is pushed against the car seat before restraining the child with the seat belt.
- After restraining the child in the car seat, always make sure that the lap belt is positioned low on the hip and firmly engaged with the child's pelvis.
- When using the support leg, make sure the support leg is in the correct position and has contact with the vehicle floor.
- Never carry the car seat by holding the headrest.

Placement in car

The Axkid Up car seat can only be installed forward-facing in a passenger seat which has a 3-point seat belt. It will fit in most, but not all seating positions, check the vehicle instruction manual to find suitable seating positions and check the vehicle list on www.axkid.com

Front passenger seat (no active airbag)	YES/NO*
Front passenger seat (active airbag)	YES/NO**
Rear passenger seat with with 3-point seat belt	YES
Seat with 2-point seat belt	NO
Side and rear facing seats	NO



* The General Regulation of Traffic in Spain, in its article 117, establishes the prohibition of driving with children of stature equal to or less than 135 centimetres located in the front seats of the vehicle, without exceptions.



Important: **The airbag must be turned off for children below 135 cm in height, unless otherwise stated by the car seat manufacturer. See the vehicle manufacturer's instructions for special recommendations for your vehicle. If you still wish to install the Axkid Up in a location where a frontal airbag is fitted, the airbag must be switched off according to the vehicle manufacturers instructions. It is crucial to always confirm that the vehicles indicator light indicates that the airbag is turned off.

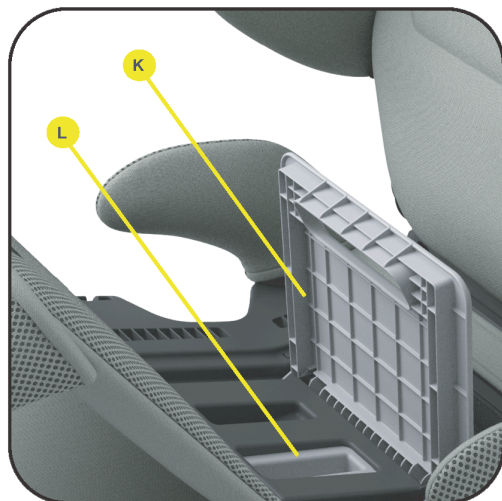
Product overview



- A. Headrest
- B. Side wing
- C. Lumbar support
- D. Height adjustable seat
- E. Calf support
- F. Support leg indicator
- G. Support leg adjustment button
- H. ISOFIX connector



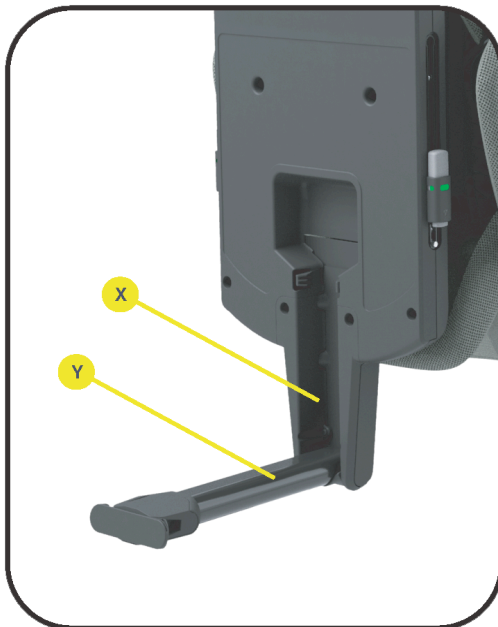
- I. ISOFIX indicator
- J. ISOFIX adjustment button



- K. Seat adjustment handle
- L. Seat adjustment button



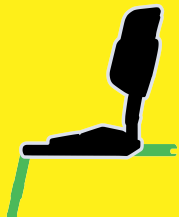
- M. Upper belt guide
- N. Axxkid side impact protection (ASIP)
- O. ASIP release button
- P. Backrest lock
- Q. Lower belt guide
- R. Headrest adjustment button
- S. Side wing release button
- T. Backrest
- U. Carrying handle
- V. Seat height adjustment guide



- X. Support leg storage compartment
- Y. Support leg

Install the car seat

Installation using ISOFIX and Support leg



Using ISOFIX and support leg

If the vehicle is fitted with ISOFIX attachment points, Axkid recommends to install the Axkid Up car seat using both ISOFIX connectors and the support leg.

1

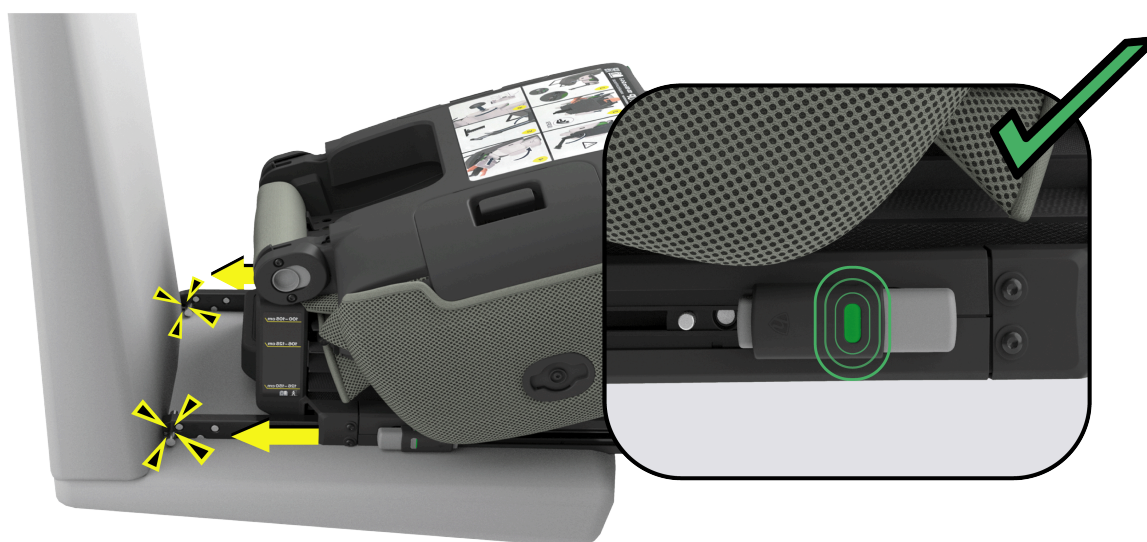
Prepare the car seat



Hold the carrying handle (U) and unfold the support leg (Y) from its storage compartment (X).

Press both ISOFIX adjustment buttons (J) on each side of the car seat and slide the ISOFIX arms out of their storage compartments, extending both ISOFIX connectors (H).

2 Place on seat



Place the car seat onto the vehicle seat and attach the ISOFIX connectors (H) to the ISOFIX attachment points in the vehicle. Confirm that the indicators (I) on both ISOFIX connectors has turned green.

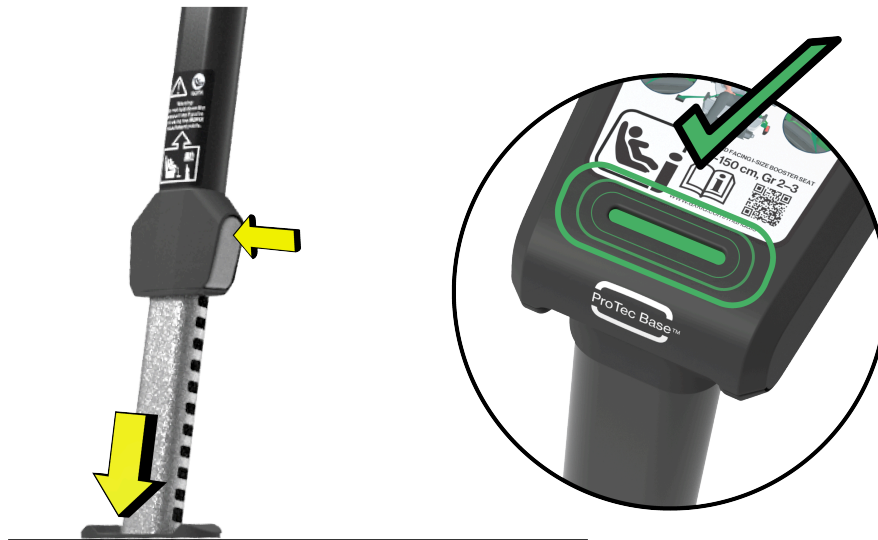
3 Secure the placement



Fold up the back support until it clicks into place.

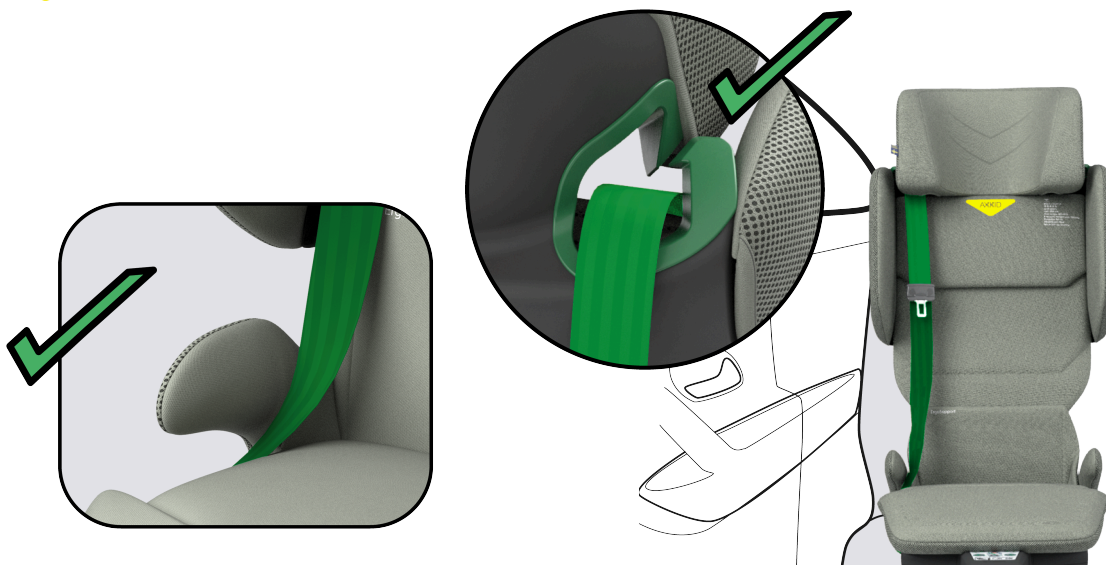
Push and wiggle the car seat firmly against the vehicle backrest. The ISOFIX-connectors on each side will click repeatedly and thereby tighten the fit towards the vehicle backrest. Make sure there is no gap between the base (U) and the vehicle backrest.

4 Adjust the support leg



Adjust the angle of the support leg (Y) until the support leg indicator (F) on top of the support leg is only displaying green. Extract the support leg by pushing the support leg adjustment button (G) until the support leg foot touches the vehicle floor. Make sure the support leg is locked and sits flush with the vehicle floor.

5 Attach the seat belt



Pull out the vehicle seat belt and route the shoulder belt through the upper belt guide (M) and the lap belt under the lower belt guide (Q).

6**Install the ASIP pad**

Install the ASIP pad (N) on the side of the car seat closest to the vehicle door. Align the ASIP pad attachment with the ASIP holder and attach it by pushing and rotating it into place.

Installation using ISOFIX attachments

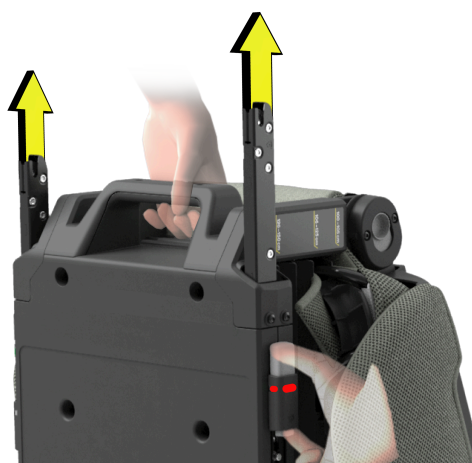


Using ISOFIX without support leg

If the vehicle is fitted with ISOFIX attachment points but the vehicle floor does not support the use of a support leg, the Axkid Up Car seat can be installed using only the ISOFIX attachments.

1

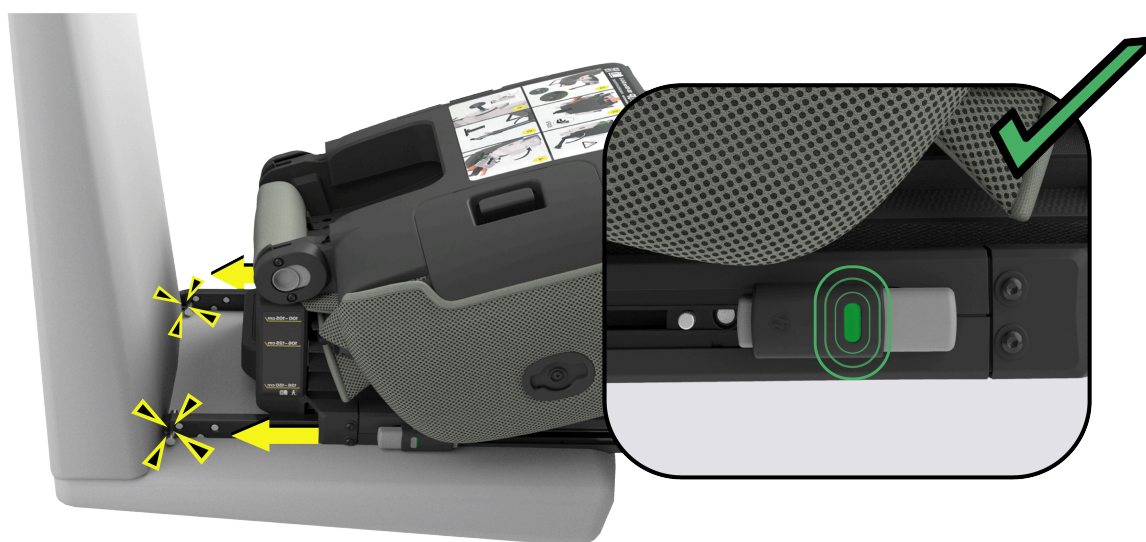
Prepare the car seat



Press both ISOFIX adjustment buttons (J) on each side of the car seat and slide the ISOFIX arms out of their storage compartments, extending both ISOFIX connectors (H).

2

Place on seat



Place the car seat onto the vehicle seat and attach the ISOFIX connectors (H) to the ISOFIX attachment points in the vehicle. Confirm that the indicators (I) on both ISOFIX connectors has turned green.

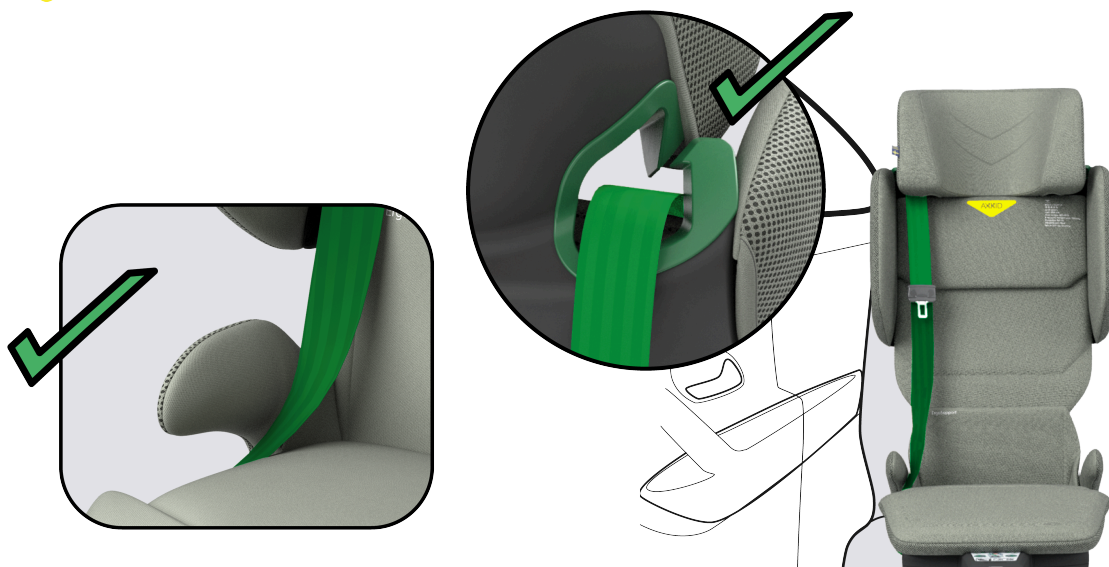
3 Secure the placement



Fold up the back support until it clicks into place.

Push and wiggle the car seat firmly against the vehicle backrest. The ISOFIX-connectors on each side will click repeatedly and thereby tighten the fit towards the vehicle backrest. Make sure there is no gap between the base (U) and the vehicle backrest.

5 Attach the seat belt



Pull out the vehicle seat belt and route the shoulder belt through the upper belt guide (M) and the lap belt under the lower belt guide (Q).

6**Install the ASIP pad**

Install the ASIP pad (N) on the side of the car seat closest to the vehicle door. Align the ASIP pad attachment with the ASIP holder and attach it by pushing and rotating it into place.

Installation without ISOFIX or Support leg



Using no ISOFIX or support leg (only seatbelt)

If the vehicle seat position is not fitted with ISOFIX attachment points; the only option is to install the Axkid Up car seat using only the vehicle seat belt. If doing so, the support leg must not be used and should remain in the storage compartment.

3

Secure the placement

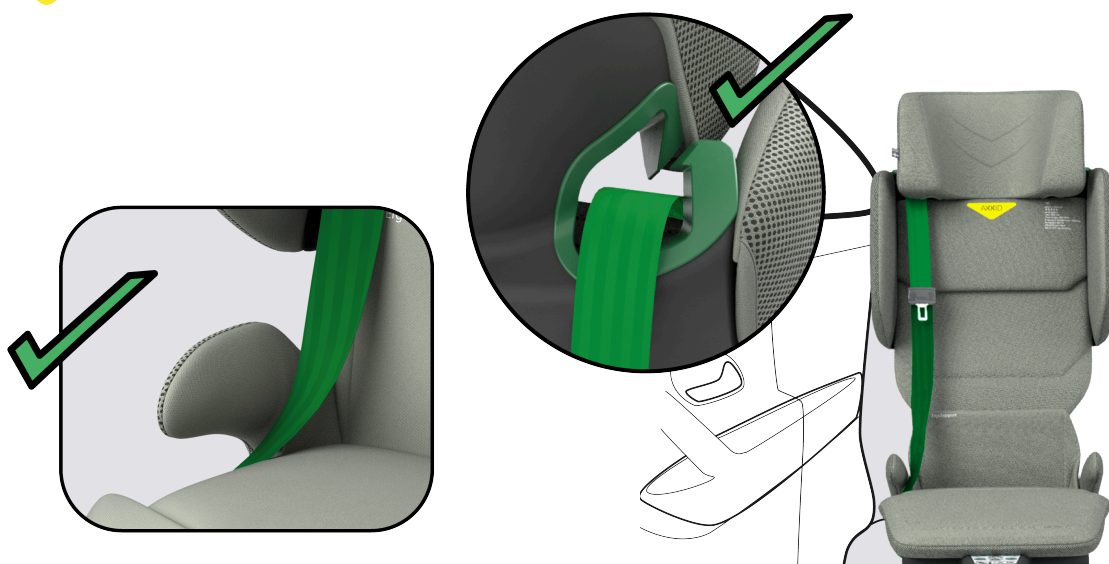


Place the Axkid Up car seat on the vehicle seat.

Fold up the back support until it clicks into place.

Press the Axkid Up car seat as close as possible against the vehicle seat.

5 Attach the seat belt



Pull out the vehicle seat belt and route the shoulder belt through the upper belt guide (M) and the lap belt under the lower belt guide (Q).

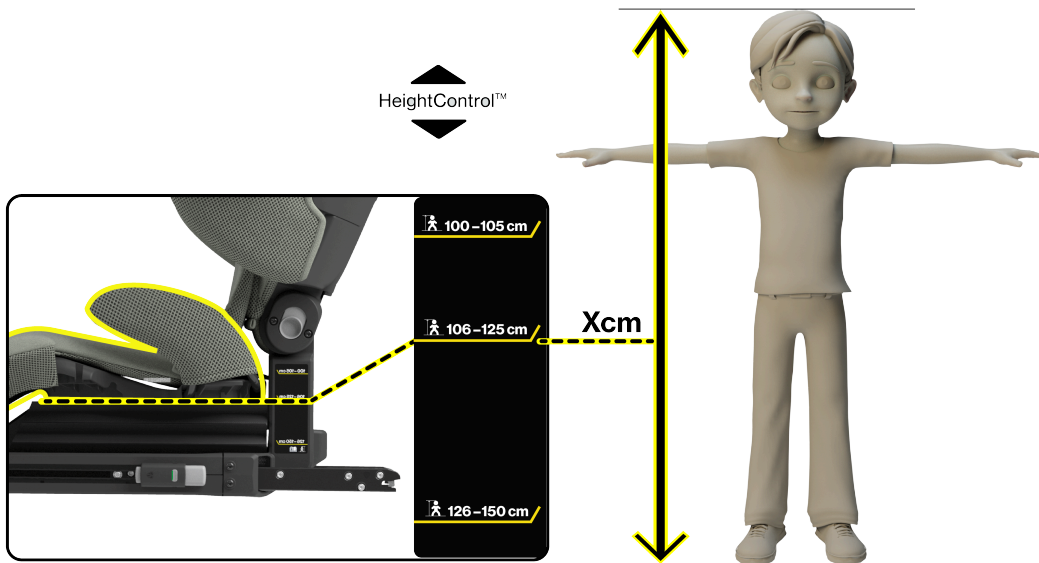
6 Install the ASIP pad



Install the ASIP pad (N) on the side of the car seat closest to the vehicle door. Align the ASIP pad attachment with the ASIP holder and attach it by pushing and rotating it into place.

Secure the child

7 Adjust seat height



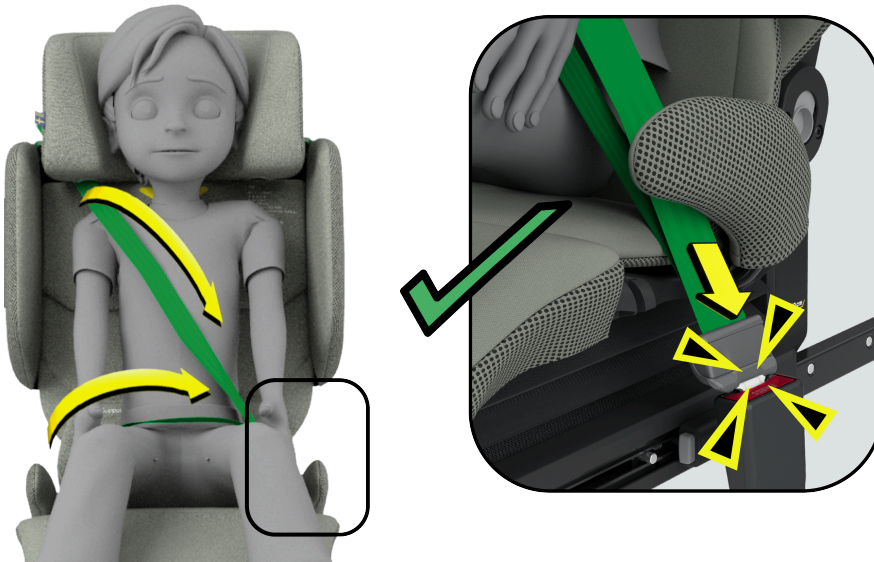
Before seating the child in the car seat, make sure the seat height corresponds to the stature of the child according to the Seat height adjustment guide (V).

To adjust the car seat, pull and lift the lumbar support (C) upwards to open the hatch in the seat. Adjust the seat upwards or downwards by holding the seat adjustment handle (K) and activating the seat adjustment button (L).

After adjusting the seat height, verify that the height setting corresponds to the stature of the child. Close the hatch and fold back the lumbar support (C).

8

Restrain the child



Seat the child in the car seat and extend the seat belt. After passing the seat belt over the child, both the lap-and shoulder belt must be routed under the lower belt guide (Q) on the opposite lower side of the car seat. Connect the vehicle seat belt to the belt buckle.

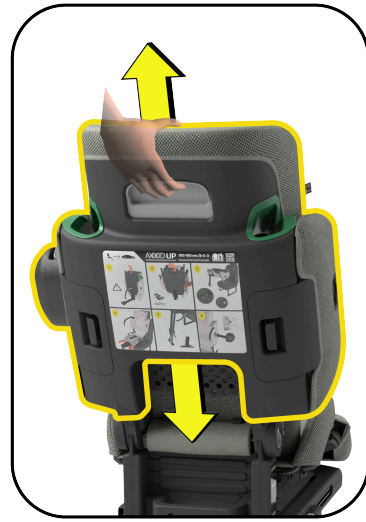
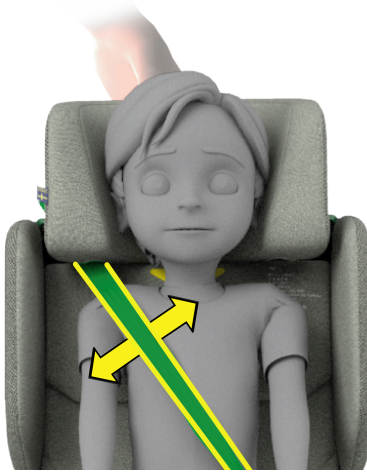
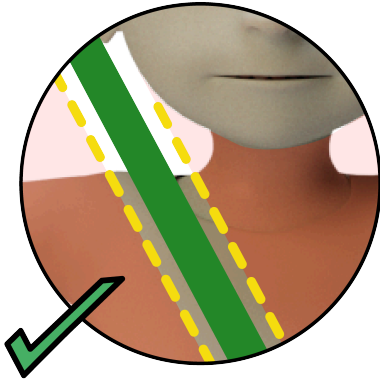


Important: After restraining the child in the car seat, always make sure that the lap belt is positioned low on the hip and firmly engaged with the child's pelvis.



Tip: For quicker and easier restraining of the child, the seat belt can be kept routed through the belt guides while the car seat remains installed in the car.

9 Check seat belt placement



Make sure the shoulder belt is routed over the middle of the child's shoulder. If not, the headrest needs to be adjusted.

To adjust the headrest height, push the headrest adjustment button and slide the headrest (A) upwards or downwards.



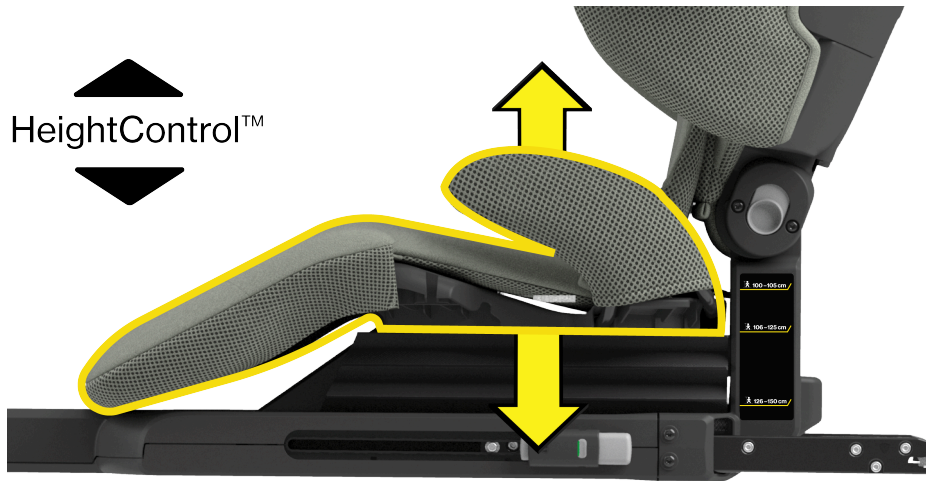
Important: Double check that the vehicle seat belt is routed through both the upper and lower belt guides.

Adjustments

Axkid Up is designed to ensure a comfortable and safe fit by growing with the child. As the child grows it is important to adjust the seat to ensure the best possible protection for the child in the case of an accident.

Axkid recommends checking the fit of the child in the car seat before each ride.

Adjust the seat height



After installation of the car seat in the vehicle, the seat height can easily be adjusted. Use the Seat height adjustment guide (V) marked on the side of the car seat to ensure the correct seat height.

To adjust the car seat height, pull and lift the lumbar support (C) upwards to open the hatch in the seat.

Adjust the seat upwards or downwards by holding the seat adjustment handle (K) and activating the seat adjustment button (L). Once the seat height has been adjusted to the desired position, release the seat adjustment button (L). Listen for a click, and ensure the seat is securely locked into place by pulling the seat adjustment handle (K) upwards.

After adjusting the seat height, verify that the height setting corresponds to the stature of the child. Close the hatch and fold back the lumbar support (C).

ErgoSupport



Depending on the child's preference, the lumbar support pad can be positioned differently or removed entirely from the seat.

Side wings



If the child's height is 126 cm and above, the side wings can be excluded from use.

Attach

Slide the two prongs of the side wings into the corresponding slots in the car seat backrest. Press and snap the side wing (B) into place.

Detach

Grab the side wing (B) and pull the release lever (S), push the side wing (B) backwards from the car seat.

Uninstall the car seat

1. Remove the seat belt from the belt guides.
2. If using the support leg: push the support leg adjustment button (G) and raise the lower part of the support leg.
3. If using ISOFIX: release the ISOFIX connectors (H) by pushing both ISOFIX adjustment buttons (J) and retract the ISOFIX connectors (H).
4. Lower the seat height if raised. Pull and lift the lumbar support (C) upwards to open the hatch in the seat. Adjust the seat downwards by holding the seat adjustment handle (K) and activating the seat adjustment button (L). Close the hatch and fold back the lumbar support (C).
5. Fully extend the backrest into an upright position, pull the two backrest locks (P) upwards simultaneously and fold down the backrest.
6. Grab the carrying handle (U) and remove the car seat from the vehicle.
7. Fold the support leg up into its storage compartment.

Care and maintenance

- The seat textile cover can be machine washed at 30° C on a gentle cycle. Do not put the cover in a dryer as this can damage the cover and the padding may separate from the fabric. Visit www.axkid.com to find videos explaining how to remove and attach the cover.
- If the textile seat cover needs replacing, ensure only original products from Axkid are used. If other products are used, the Axkid car seat's safety system may be compromised and could lead to severe injury in case of an accident.
- Any plastic parts of the Axkid car seat can be cleaned with mild detergent and water. Do not use aggressive chemicals containing solvents or similar, as this can cause damage to the plastic and compromise the safety of the car seat.
- Do not make any modifications or alterations to the Axkid car seat other than those described in this instruction manual.
- Any repairs must be carried out by the manufacturer or agent.
- Handle the car seat with care and clean it regularly for maximum durability.

Remove the textile cover

Side wings

Push the ASIP release button (O) and rotate the ASIP pad (X) to remove it from the car seat. Release the two push buttons and gently peel of the fabric from around the ASIP connector. Gently pull the cover to release it from the side wing.

Headrest

Gently peel the edges of the cover over the top of the headrest and gently pull it forwards.

Backrest

On the backside of the backrest, release the textile bar from the snaphook interface. Pull the textile through to the front side. Gently peel of the edges of the fabric over the backrest plastic piece and pull it forwards to remove the cover.

Seat

Open the hatch in the seat textile by lifting the lumbar support (C), Release the two textile loops, one on each side of the seat and continue to fold the seat textile forwards. Unhook the two elastic bands under the front flap to release the seat textile completely.

Belthorn cover

Gently peel off the textile around the green belt guide and pull to remove the cover from the horns.

Reinstall the textile cover

Reverse the steps of Remove the textile cover to reinstall the textile cover on the car seat.

Warranty



CAUTION: Handle the car seat with care. Never carry the seat by holding in the headrest!

The Axkid car seat is covered by a 24 month warranty from the date of purchase. Bring the receipt to the place of purchase in case of warranty claims.

The warranty does not cover

- Normal wear and tear.
- Damage due to incorrect use, neglect, or accident.
- If repairs have been carried out by a third party.
- All materials used have a very high UV resistance rating. However, UV light is very aggressive and will eventually cause the seat cover to fade, which is considered normal wear and tear.

Recycling

Axkid strongly recommends recycling of old car seats. Before leaving the car seat at the local recycling station, cut off any harness straps from the seat, remove the textile cover, remove as many Styrofoam parts as possible, separate metal and plastic parts if possible. The main part of the car seat should be marked unsafe or expired (use a marker) to deter anyone from using it again. Please follow the local municipal guidelines for recycling instructions for the different materials.



AXKID

© Copyright Axkid 2025
All rights reserved Axkid AB | Göteborgsvägen 94 | 43137 Mölndal | Sweden
FEB 2025 Art. no 1106091